



Superior Court of California, County of Napa

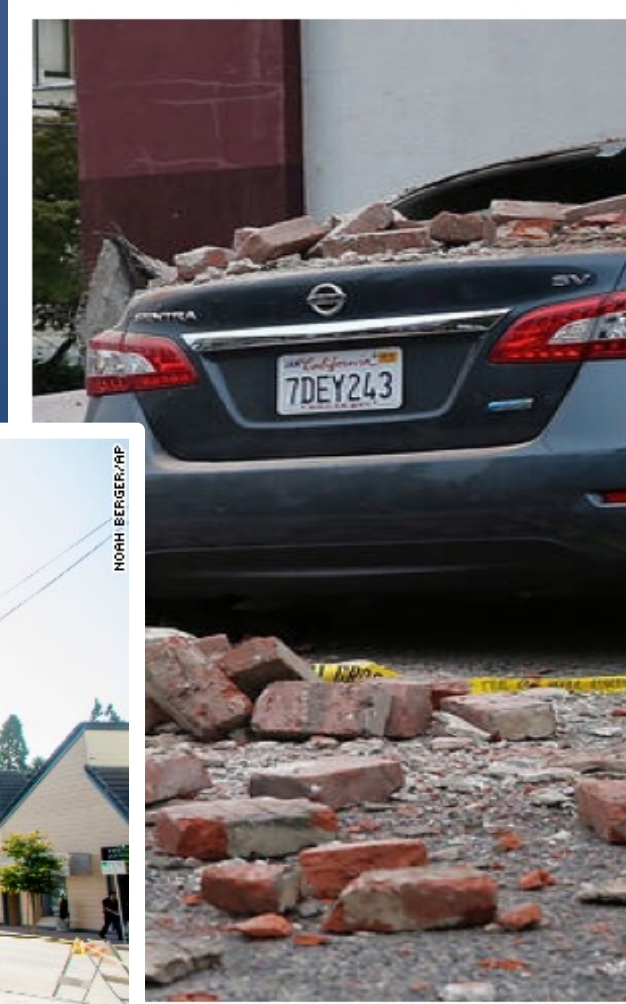
Napa Quake 2014

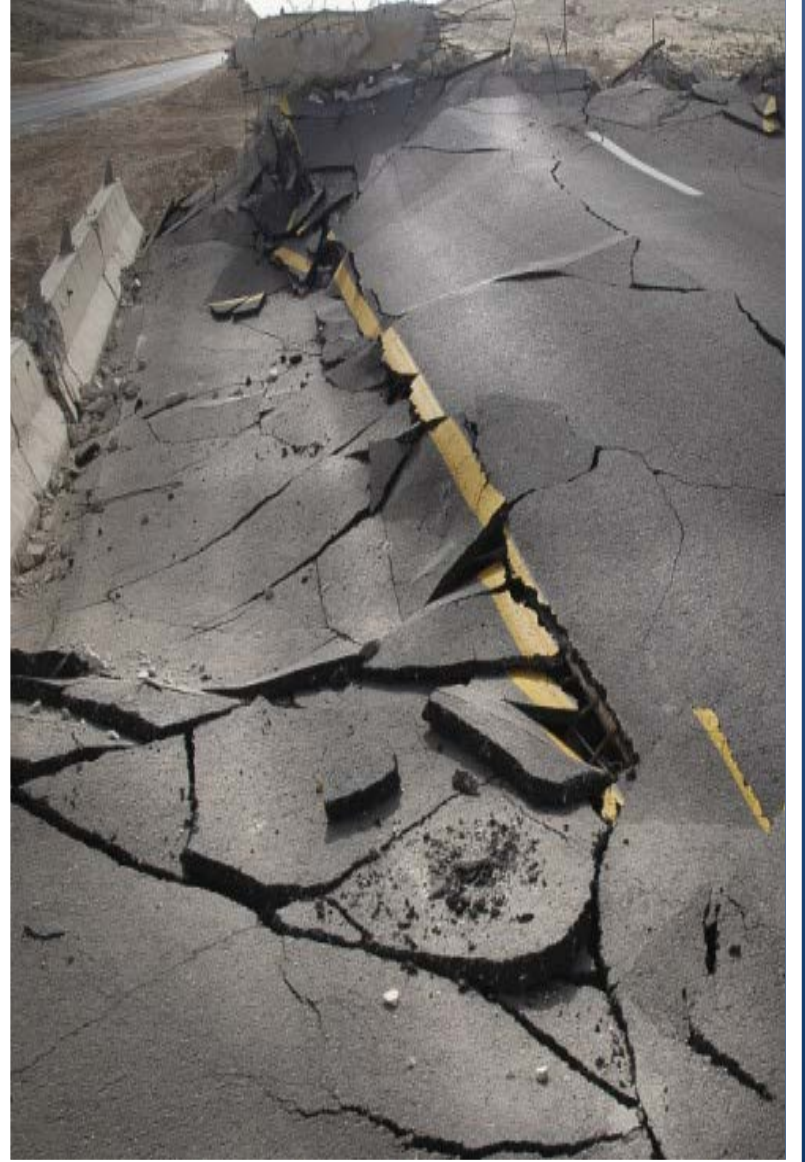
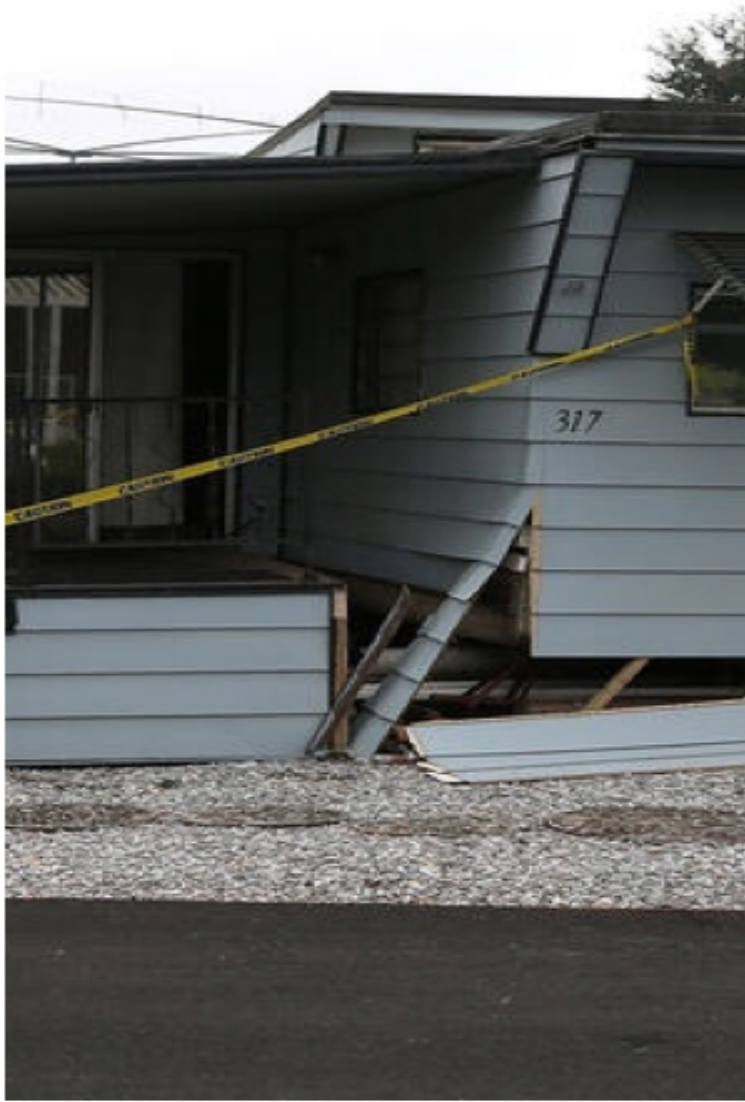
Napa Earthquake Details

- Sunday, August 24, 2014
- 3:20 am
- Epicenter 6 miles south
- West Napa Fault



Broad Impact Throughout the City







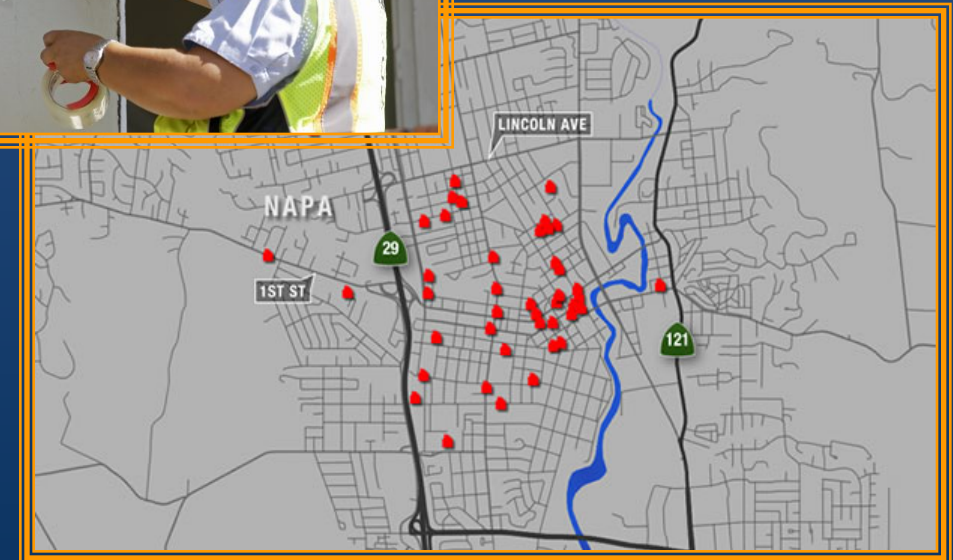
Downtown Napa is Hit Hard



Local Government Impact



- Historic Courthouse Red-Tagged
- Several County Agencies Displaced from Facilities
 - Administration
 - County Counsel
 - District Attorney
 - Public Defender
 - Probation
 - Child Support Services
 - Jail Population (60 inmates to Solano – local facilities closed for visitation)





Napa Facility Overview



Juvenile Court

One Courtroom/Chambers, Clerk's Office, File Storage

No Damage

Criminal Courthouse

Five Courtrooms/Chambers, Criminal/Minor Offense Clerk's Office, Tunnel Connection to Jail

Superficial structural damage

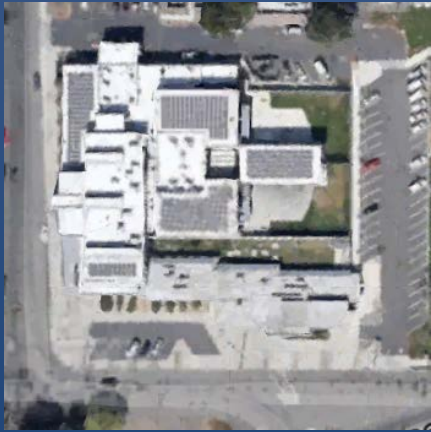
Burst water pipes on third and second floor

Historic Courthouse

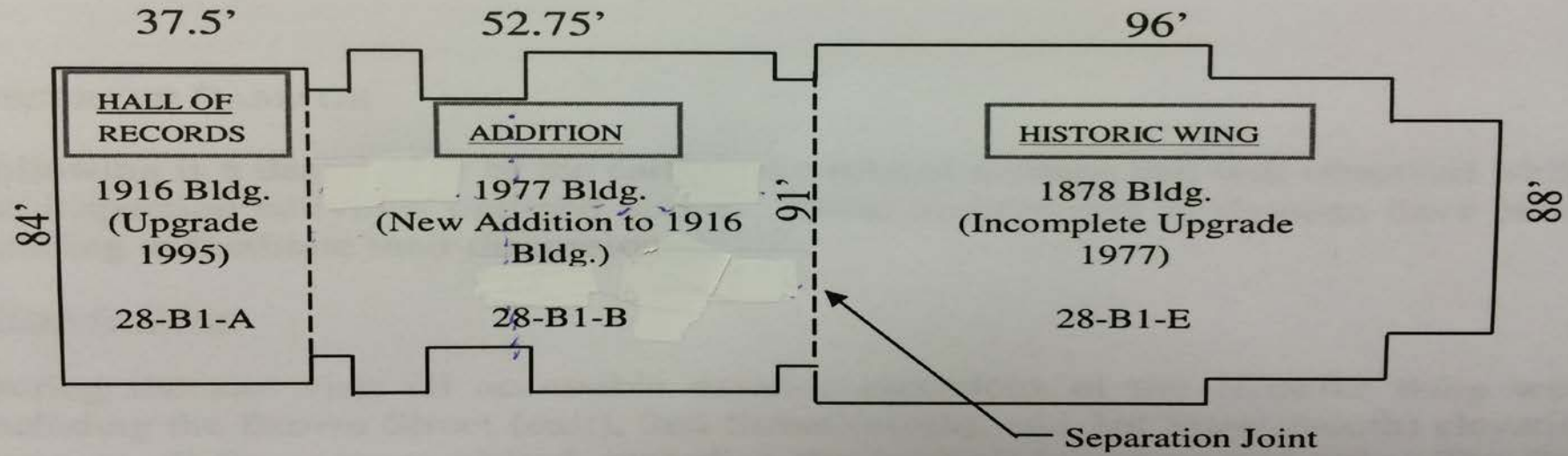
Four Courtrooms/Chambers, Civil/Family Law Clerk's Office, Jury Assembly Room, Family Court Services, Law Library, HR, Finance/Accounting, Information Technology, Administration

Major structural and building system damage

Napa Facility Overview – Aerial View



Historic Courthouse Layout



Napa County Historic Courthouse - key plan

Historic Courthouse Status



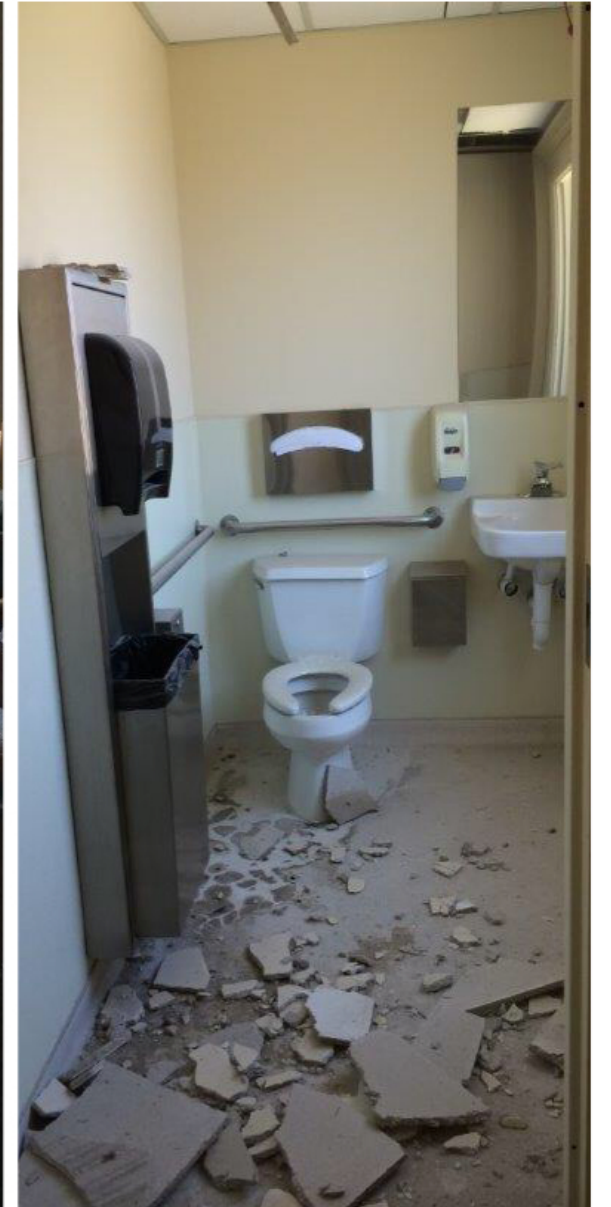
- **Structural Damage in 1873 Portion – Red Tagged and Closed**
 - ❖ *Front Entrance with ADA Access*
 - ❖ *Three of Four Courtrooms/Chambers*
 - ❖ *Both Jury Deliberation Rooms*
 - ❖ *Half of Clerk's Office*
 - ❖ *Law Library*
 - ❖ *One of Two Legal Research Offices*
- **Nature of Major Damage**
 - ❖ *Detached Roof Structure*
 - ❖ *Masonry Walls Compromised on Second Floor and Roof Attic*
 - ❖ *Major Water Damage*
 - ❖ *No Asbestos*
 - ❖ *Lead Dust*

Exterior Damage





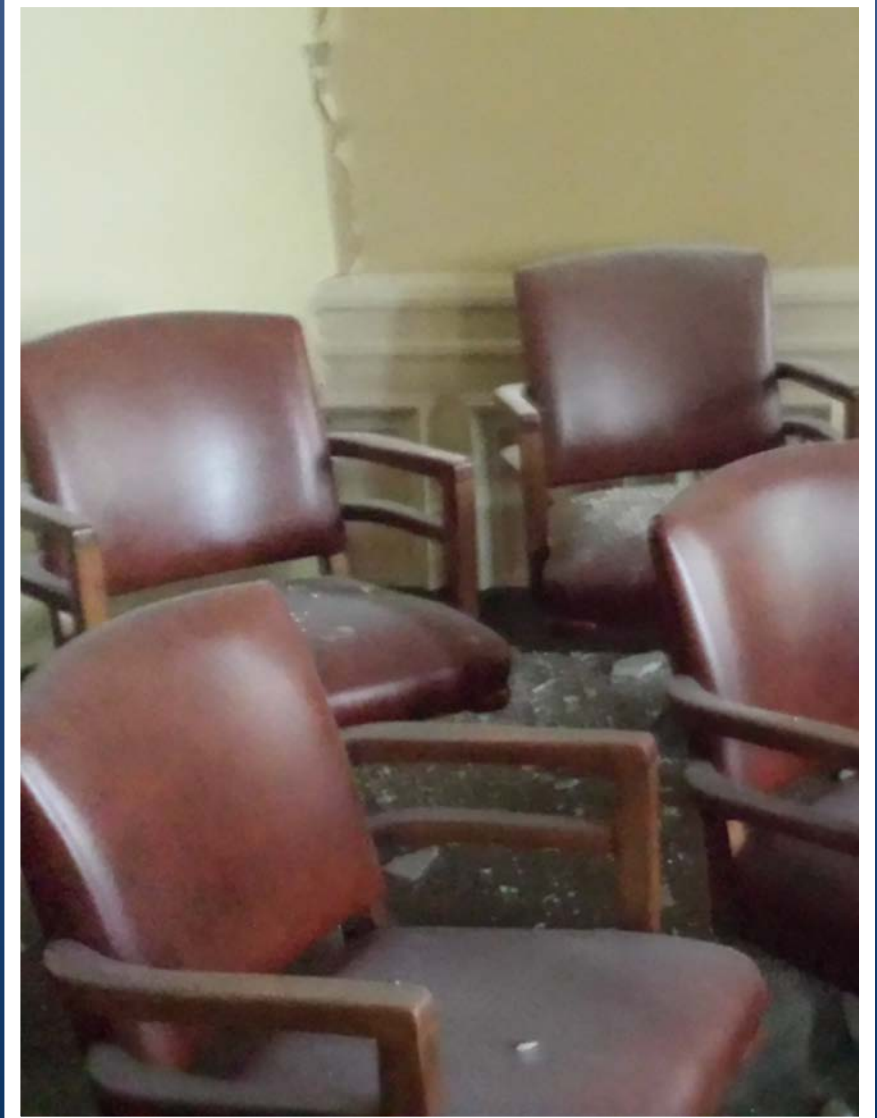
Interior Damage



Interior Structural Damage Assessment



2nd Floor Damage to Courtrooms







Lead Dust and Mold Abatement







Initial Response:

- *Goal was to be open for business for all services on Monday morning*
- *Required to move all HCH staff and Judicial Officers to the Criminal Courthouse*
- *Ensuring safety of Criminal Courthouse*
- *Address water leak issues to prevent mold and further damage*
- *Stabilize technology infrastructure*
- *Begin Criminal Courthouse cleanup*

Long Term Plan – 2 to 4 Years:

- *Convert law library to a temporary chambers*
- *County to build out file storage area into a temporary courtroom*
- *Convert jury assembly room into a temporary courtroom*
- *Expanded use of juvenile courtroom at juvenile detention facility*
- *Reoccupy the 1916 and 1977 portions of the building while the 1878 historic portion is repaired and reconstructed*

Lessons Learned

- *Electronic case files*
- *Generator Power for key locations (data center/redundant systems)*
- *Standard PC images / roaming profiles*
- *Cell phone use may be limited by overloaded systems*
- *Complexity of multiple agencies with overlapping responsibilities*
 - ❖ *Napa Superior Court*
 - ❖ *Judicial Council*
 - ❖ *County of Napa*
 - ❖ *State Office of Emergency Services (CalEMA)*
 - ❖ *Federal Emergency Management Agency (FEMA)*

Questions and Comments?

