



### CALIFORNIA'S MEDICAID: MEDI-CAL & CHIP

#### WHAT IS MEDI-CAL?

California's version of the national health care program **Medicaid**

entitles youth **21 and under** to **medically necessary care** including preventive, physical, mental and dental services

**free** for households with incomes **up to 266%** of the federal poverty line (FPL)<sup>1</sup>

beneficiaries receive services through **managed care** or **fee-for service**

#### WHAT IS CHIP?

stands for **Children's Health Insurance Program (CHIP)** and is part of the Medi-Cal program

**expands health coverage** to youth **19 and under** with **incomes above Medi-Cal thresholds**

California has both a CHIP within its Medi-Cal program and a stand-alone CHIP

beneficiaries receive services through **managed care** or **fee-for-service**<sup>2</sup>

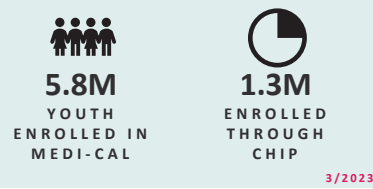
#### ELIGIBILITY FOR MEDI-CAL & CHIP (INCOME THRESHOLDS)<sup>3</sup>

GROUP	AGE	MEDI-CAL	CHIP <sup>4</sup>
General youth	0 - 1	213% of FPL	322% of FPL
	2 - 5	142% of FPL	266% of FPL
	6 - 18	133% of FPL	266% of FPL
	19 - 25	138% of FPL	N/A
Current/former foster youth	0 - 26	Current/former foster youth are automatically enrolled in Medi-Cal, regardless of income.	
Juvenile justice youth	10 - 17	Youth in juvenile detention facilities have Medi-Cal benefits suspended (but not terminated) until release.	
Undocumented youth	0 - 25	Children and youth 25 and under who meet income thresholds are covered by Medi-Cal regardless of immigration status.	

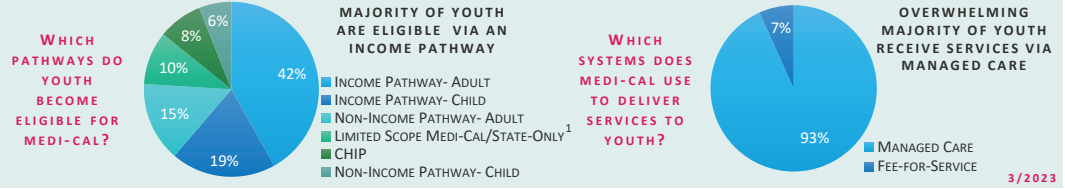
<sup>1</sup> If income exceeds this threshold when qualified, a share of cost plan is created where household pays a certain amount before Medi-Cal starts to pay  
<sup>2</sup> Children enrolled in Presumptive Eligibility receive fee-for-service Medi-Cal until they have finalized their enrollment  
<sup>3</sup> Eligibility thresholds for Medi-Cal and CHIP are based on household income levels as a percentage of the federal poverty level (children up to age 19 are eligible if annual household income was below 266% of FPL)  
<sup>4</sup> In three counties (San Mateo, Santa Clara and San Francisco), separate CHIP programs cover youth up to 19 up to 322% of the federal poverty level

### MEDI-CAL & CHIP: ENROLLMENT, PATHWAYS, AND DELIVERY SYSTEMS

#### ENROLLMENT(MONTHLY)



#### PATHWAYS TO MEDI-CAL/CHIP AND DELIVERY SYSTEMS



<sup>1</sup> Department of Health Care Services does not report to CMS total enrollment in limited scope Medi-Cal or state-only funded programs (includes children and youth 25 and under and adults 50 and older regardless of immigration status)

### MEDI-CAL FOR KIDS & TEENS (RENAMED IN 2023)

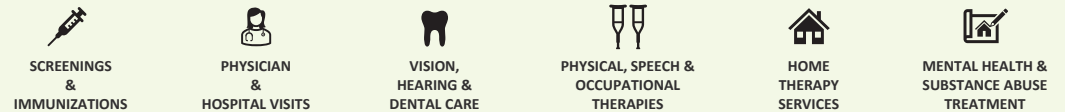
#### WHAT IS THE MEDI-CAL FOR KIDS & TEENS BENEFIT?

refers to the federal **Early Periodic Screening Diagnostic Treatment (EPSDT)** benefit

as of **2023**, California refers to EPSDT as **Medi-Cal for Kids & Teens**

entitles Medi-Cal and CHIP youth **21 and under** to **preventive health care** and **mental health services**

**MEDI-CAL FOR KIDS AND TEENS GUARANTEES YOUTH 21 AND UNDER WITH SCREENING SERVICES, CORRECTIVE TREATMENT, AND DENTAL SERVICES.**

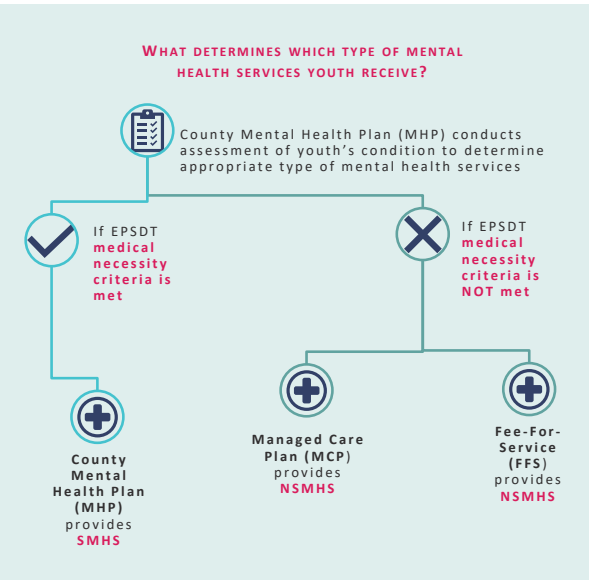


### MEDI-CAL MENTAL HEALTH SERVICES

#### TYPES OF MENTAL HEALTH SERVICES

SPECIALTY MENTAL HEALTH (SMHS)	NON-SPECIALTY MENTAL HEALTH SERVICES (NSMHS)
INTENSIVE CARE COORDINATION	INDIVIDUAL, GROUP, AND FAMILY THERAPY
	DYADIC SERVICES
INTENSIVE HOME-BASED SERVICES	MEDICATION SUPPORT
	CRISIS SERVICES
	PSYCHIATRIC HEALTH FACILITIES SERVICES
THERAPEUTIC BEHAVIORAL SERVICES	PSYCHIATRIC INPATIENT HOSPITAL SERVICES
	TARGETED CASE MANAGEMENT
THERAPEUTIC FOSTER CARE	PEER SUPPORT SERVICES
	PSYCHIATRIST SERVICES
	PSYCHOLOGIST SERVICES
	PSYCHIATRIC NURSING FACILITY SERVICES

#### PROCESS OF RECEIVING MENTAL HEALTH SERVICES



#### MEDICALLY NECESSARY CRITERIA<sup>1</sup>

YOUTH HAS ONE OF THE FOLLOWING	
HIGH RISK IN TRAUMA SCREENING TOOL	
INVOLVED IN THE CHILD WELFARE SYSTEM	
INVOLVED IN THE JUVENILE JUSTICE SYSTEM	
EXPERIENCING HOMELESSNESS	
OR	
AT LEAST ONE	AND
SIGNIFICANT IMPAIRMENT	DIAGNOSED MENTAL HEALTH DISORDER
REASONABLE PROBABILITY OF SIGNIFICANT DETERIORATION IN AN IMPORTANT AREA OF LIFE FUNCTIONING	SUSPECTED MENTAL HEALTH DISORDER
A REASONABLE PROBABILITY OF NOT PROGRESSING DEVELOPMENTALLY	SIGNIFICANT TRAUMA PLACING YOUTH AT RISK FOR FUTURE MENTAL HEALTH CONDITION
A NEED FOR SMHS NOT INCLUDED WITHIN THE MEDI-CAL MANAGED CARE PLAN MENTAL HEALTH BENEFITS	

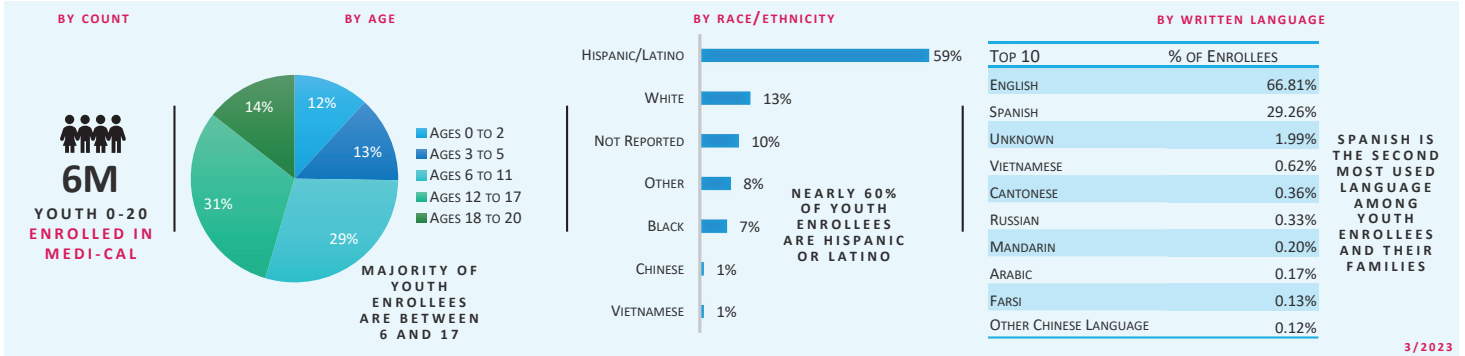
<sup>1</sup> County Mental Health Plans (MHP) are tasked with ensuring all youth receive mental health services, regardless of whether they meet the EPSDT medical necessity criteria



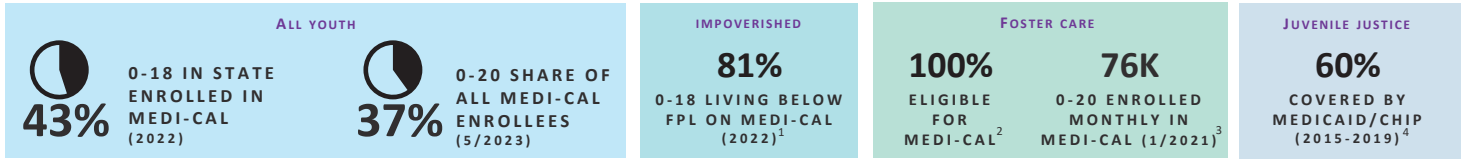


### SNAPSHOT OF MEDI-CAL YOUTH ENROLLEES

#### ALL YOUTH ENROLLEES



#### YOUTH ENROLLEES BY SUBGROUP



<sup>1</sup> FPL stands for the Census Bureau's federal poverty level  
<sup>2</sup> Children and youth who receive federal foster care benefits are automatically eligible for Medi-Cal  
<sup>3</sup> Data point does not include all who fall under the Adoption/Foster Care aide category (just those in foster care)  
<sup>4</sup> Data point includes children and youth 12 to 17 years old nationwide who stayed overnight in jail/detention in past year (2015-2019 NSDUH)

### MEDI-CAL FOR KIDS AND TEENS: USE OF SERVICES

MEDI-CAL FOR KIDS AND TEENS GUARANTEES YOUTH 21 AND UNDER WITH SCREENING SERVICES, CORRECTIVE TREATMENT, AND DENTAL SERVICES.

#### ANNUAL EPSDT REPORTING DATA<sup>1</sup>



<sup>1</sup> As of 2023, the Early and Periodic Screening, Diagnostic and Treatment (EPSDT) benefit enacted to Federal law in 1967 is referred to as Medi-Cal for Kids and Teens in California

### MEDI-CAL FOR KIDS AND TEENS: USE OF SPECIALTY MENTAL HEALTH SERVICES (SMHS)

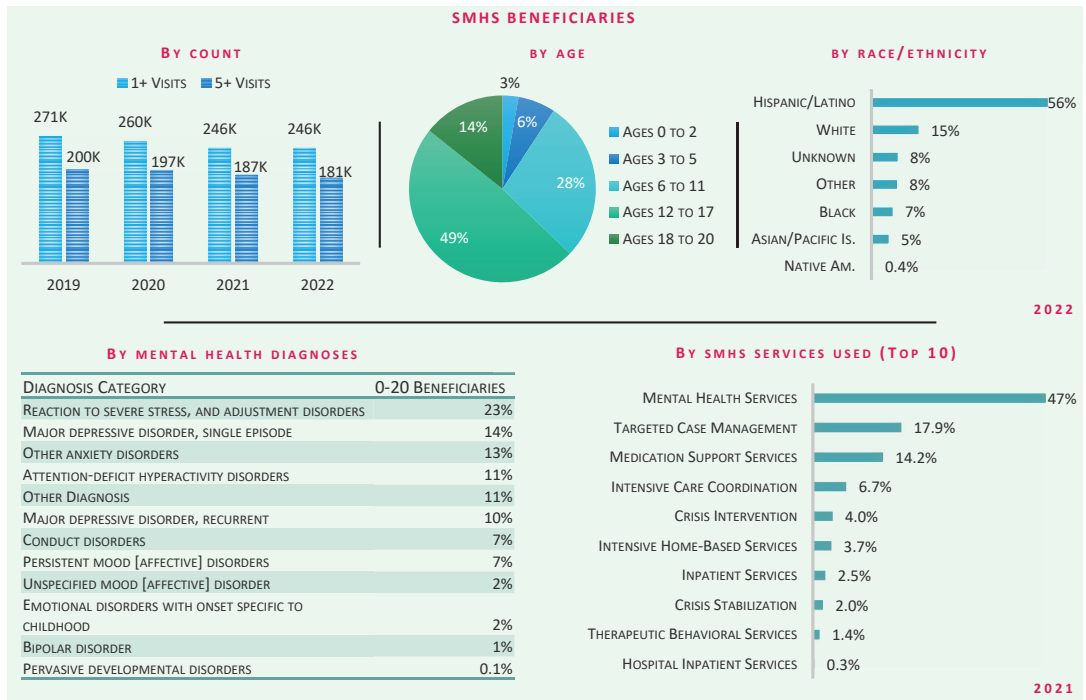
#### WHAT ARE SPECIALTY MENTAL HEALTH SERVICES (SMHS)?

mental health services delivered through county mental health plans available to youth under 21 who meet the medical necessity criteria for "specialty" mental health services<sup>1</sup>

**SPECIALTY MENTAL HEALTH SERVICES (SMHS) INCLUDE:**

- INTENSIVE CARE COORDINATION (ICC)
- INTENSIVE HOME-BASED SERVICES (IHBS)
- THERAPEUTIC FOSTER CARE (TFC)
- THERAPEUTIC BEHAVIORAL SERVICES (TBS)
- PSYCHOTROPIC MEDICATION EVALUATION
- INDIVIDUAL GROUP AND FAMILY THERAPY
- CRISIS COUNSELING AND STABILIZATION
- SPECIAL DAY PROGRAMS

**YOUTH 0-20 RECEIVING SPECIALTY MENTAL HEALTH SERVICES (SMHS)**  
246K



<sup>1</sup> See Infographic 3 for more information about up-to-date specialty mental health services (SMHS) medical necessity criteria

