



California Family Court Services Snapshot Study

## Report 6

Uniform Statistical Reporting System  
The 1991/1993 Client Baseline Study

# List of Figures

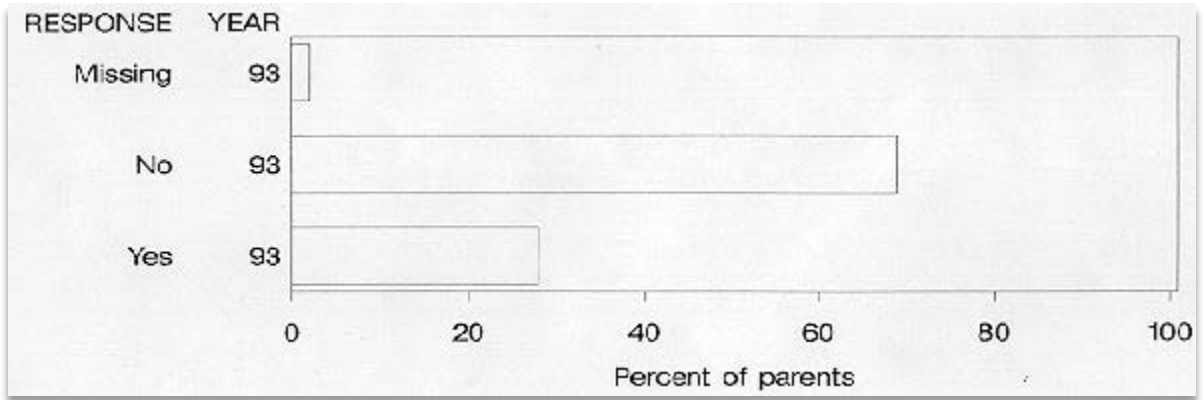
February 1996

---

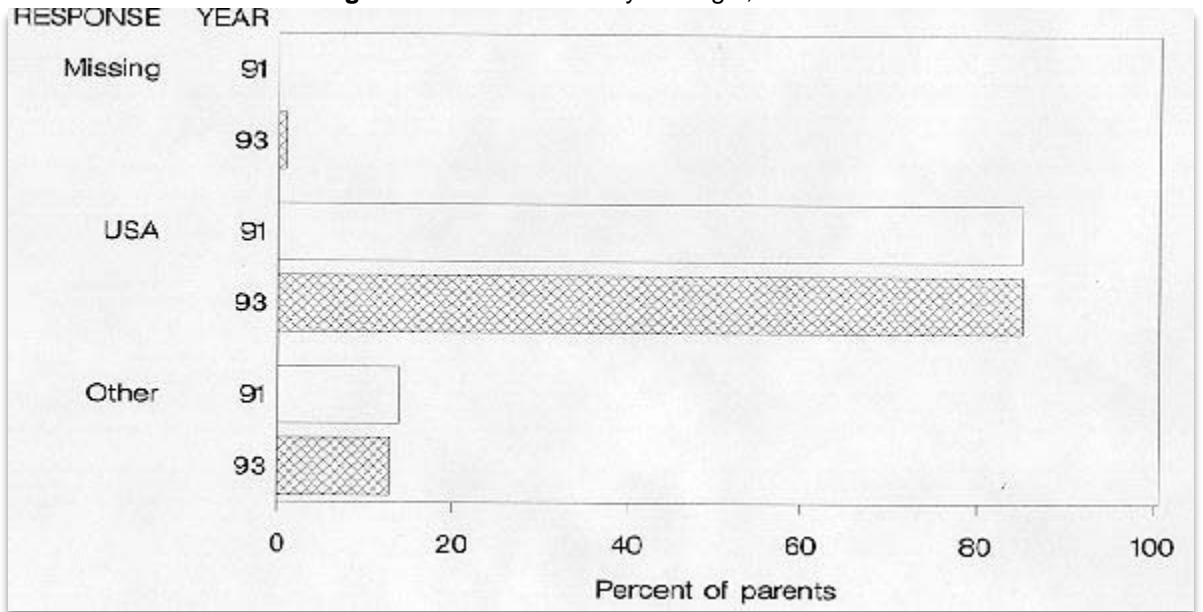
Data Source: 1991, 1993 Client Baseline Study conducted by the Statewide Office of Family Court Services,  
Administrative Office of the Courts, Judicial Council of California  
Data analysed at the parents level

- [Figure 1:](#) Families Seeking Modifications - 1993
- [Figure 2:](#) Parent's Country of Origin, 1991/1993
- [Figure 3:](#) Parent's Ethnicity, 1991/1993
- [Figure 4:](#) Ethnicity of Parents, 1991/1993
- [Figure 5:](#) Racial/Cultural Issues: Minority Families
- [Figure 6:](#) Who is Represented?, 1991/1993
- [Figure 7:](#) Parent's Education, 1991/1993
- [Figure 8:](#) Currently Employed Status, 1991/1993
- [Figure 9:](#) Parent's Poverty Status, 1991/1993
- [Figure 10:](#) AFDC Recipient, 1991/1993
- [Figure 11:](#) Marital Status, 1991/1993
- [Figure 12:](#) Multiproblem Families, 1991/1993
- [Figure 13:](#) Families with Multiple Concerns, 1991/1993
- [Figure 14:](#) Child Concerns Raised in Mediation, 1991/1993
- [Figure 14a:](#) Other Concerns, 1991/1993
- [Figure 15:](#) Domestic Violence Temporary Restraining Orders, 1991/1993
- [Figure 16:](#) Age of Children in the Family, 1991/1993
- [Figure 17:](#) Number of Children in the Family, 1991/1993
- [Figure 18:](#) Distance Between Parents, 1991/1993
- [Figure 21:](#) Report to Child Protective Services, 1991/1993
- [Figure 22:](#) Child Witnessed Violence, 1991/1993

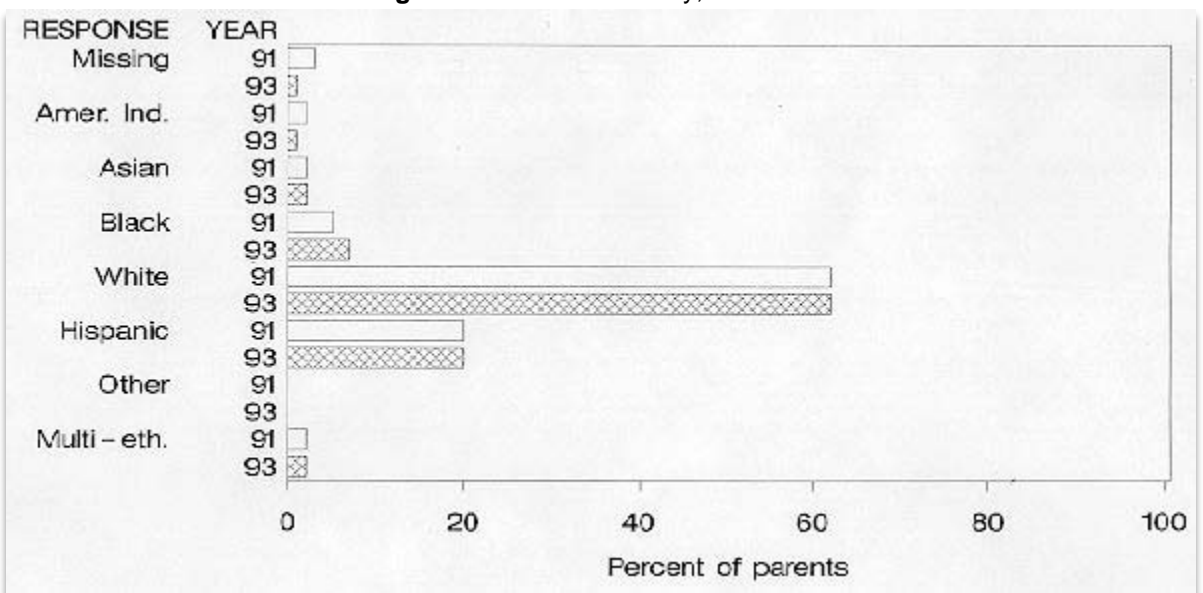
**Figure 1: Families Seeking Modifications - 1993**



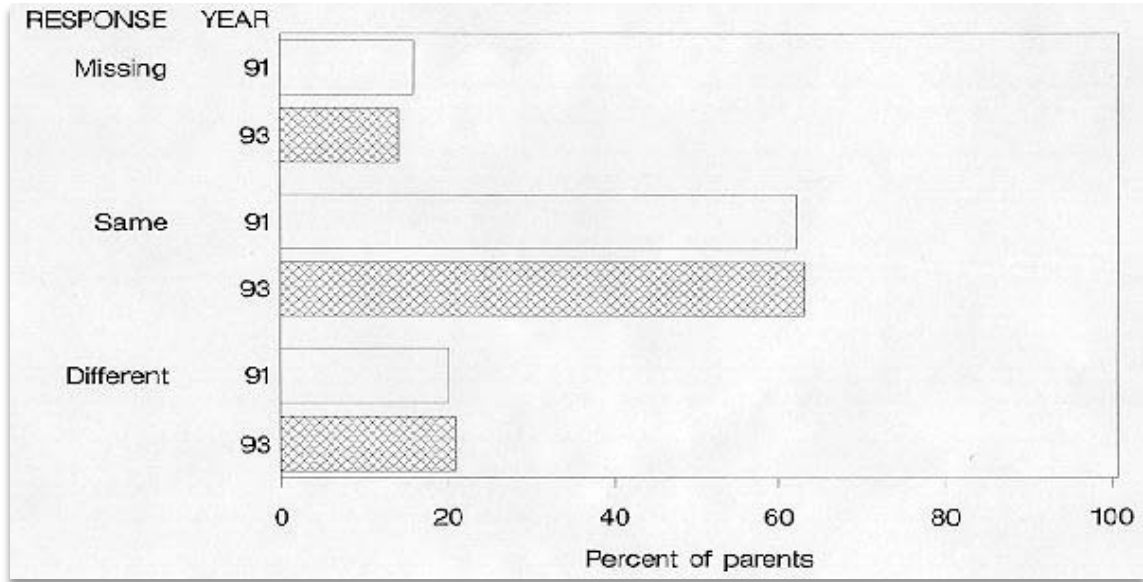
**Figure 2: Parent's Country of Origin, 1991/1993**



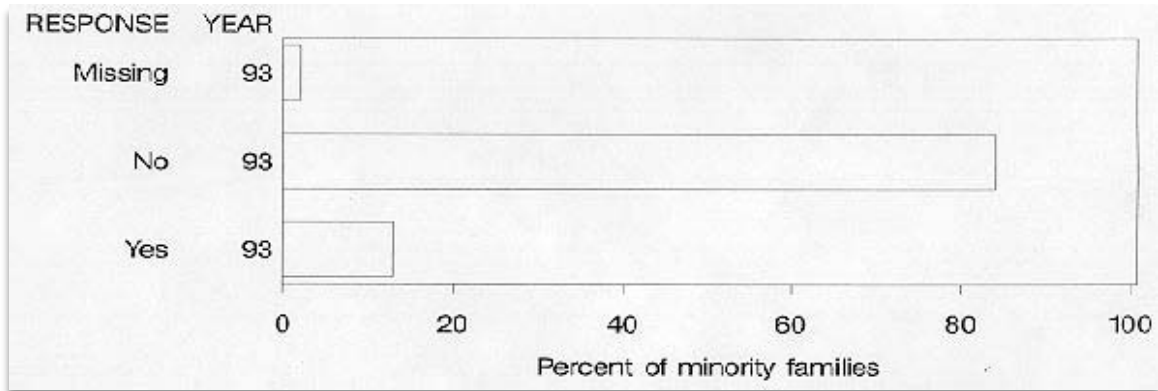
**Figure 3: Parent's Ethnicity, 1991/1993**



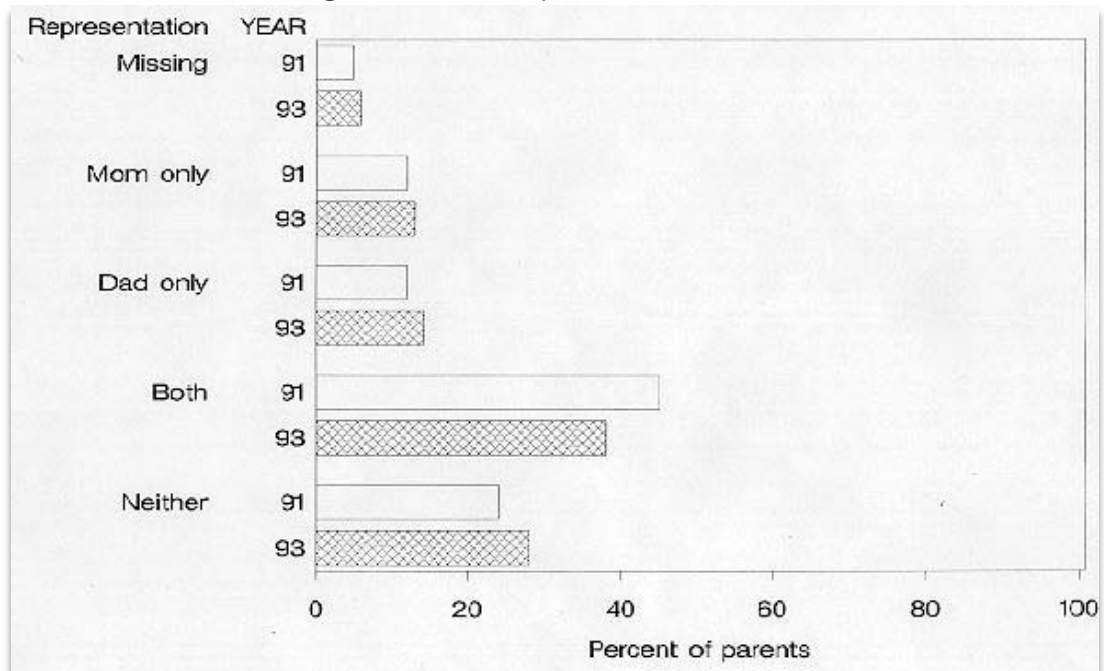
**Figure 4: Ethnicity of Parents, 1991/1993**



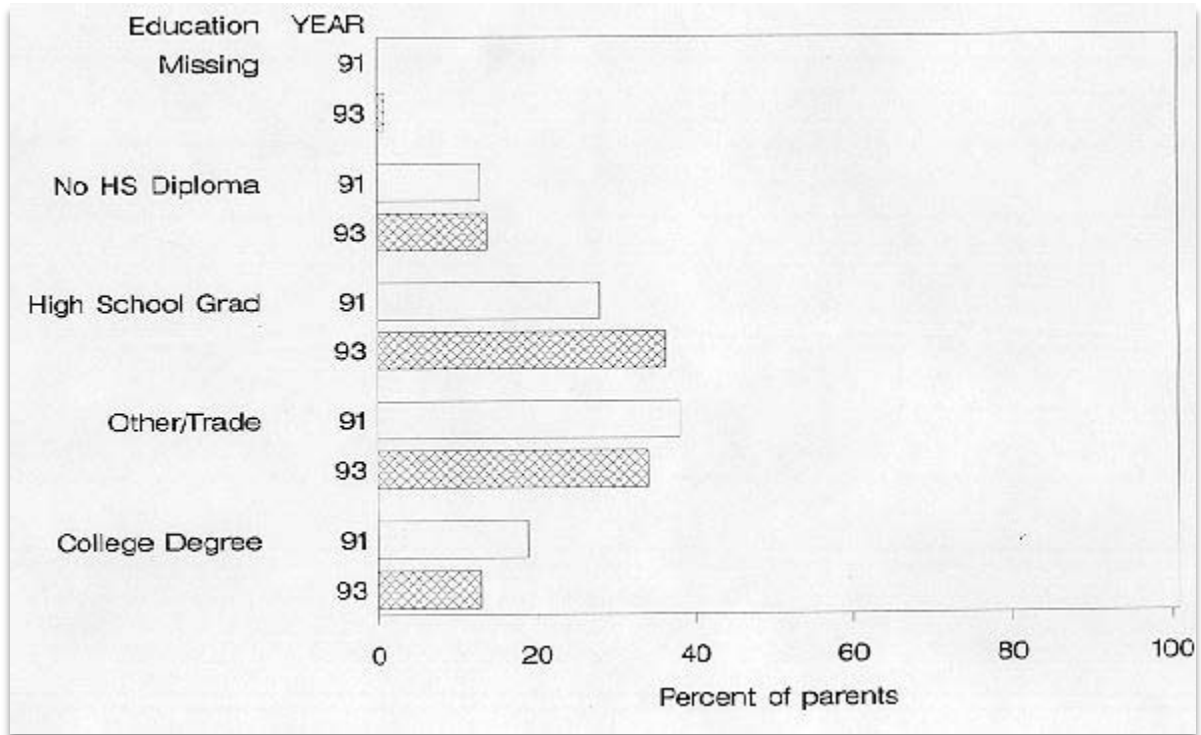
**Figure 5: Racial/Cultural Issues: Minority Families**



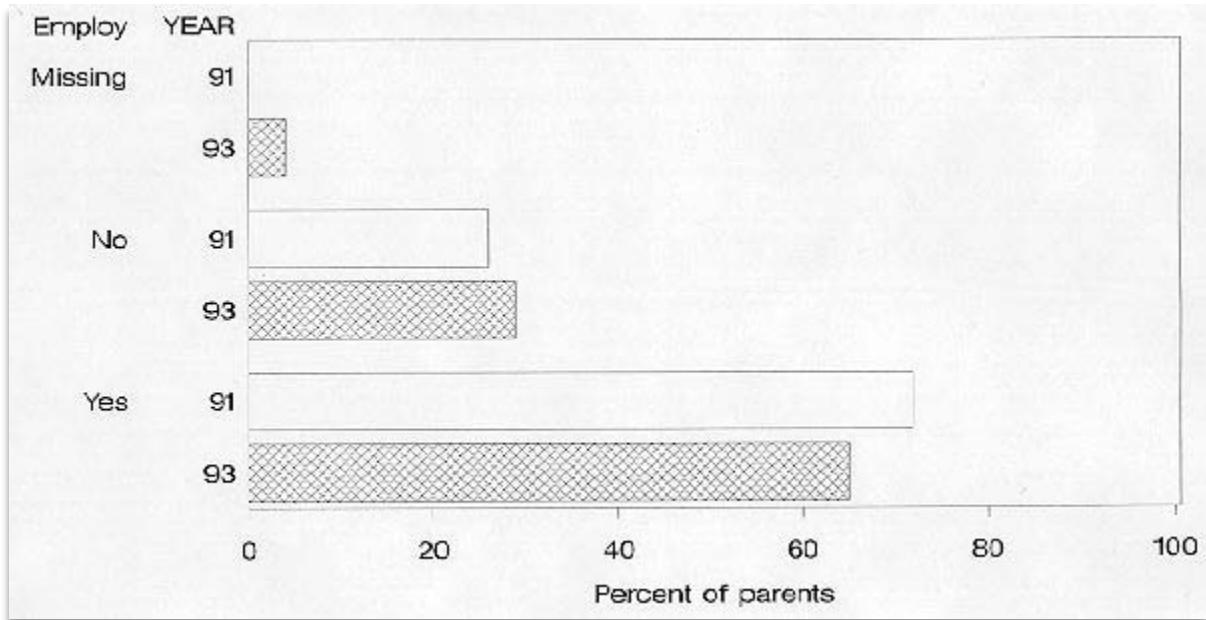
**Figure 6: Who is Represented?, 1991/1993**



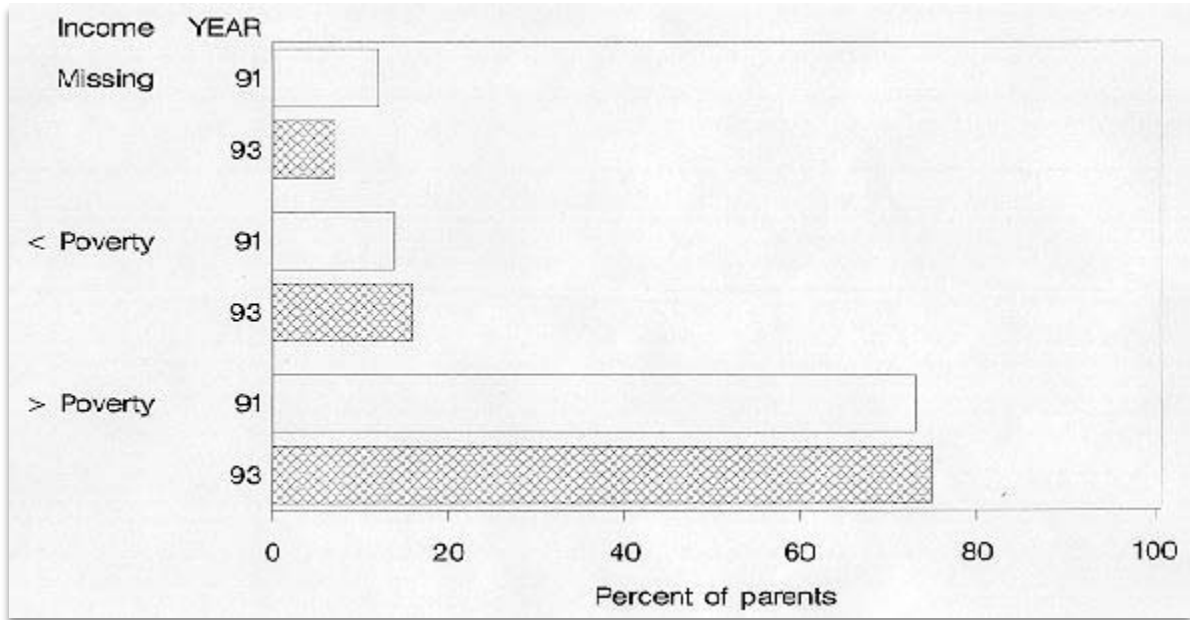
**Figure 7: Parent's Education, 1991/1993**



**Figure 8: Currently Employed Status, 1991/1993**



**Figure 9: Parent's Poverty Status, 1991/1993**



**Figure 10: AFDC Recipient, 1991/1993**

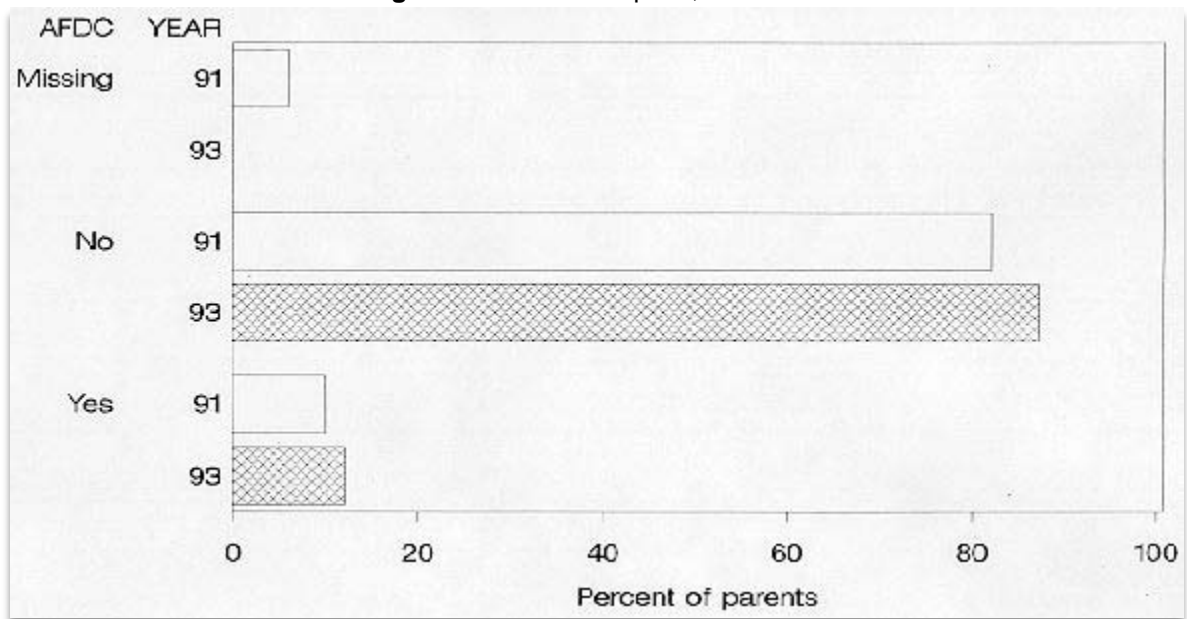


Figure 11: Marital Status, 1991/1993

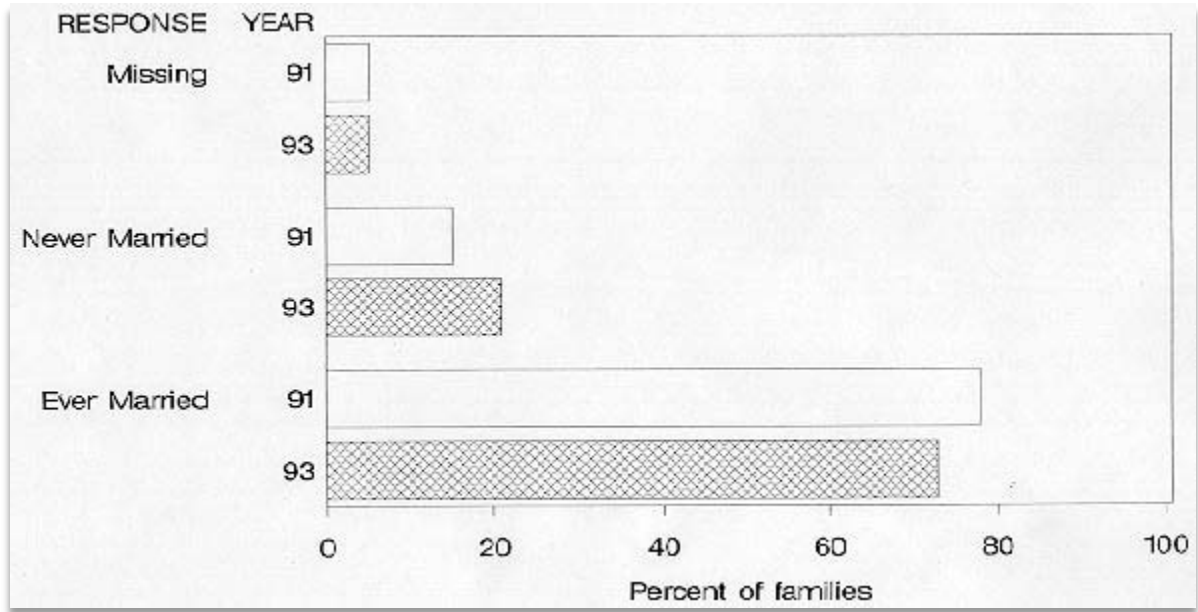
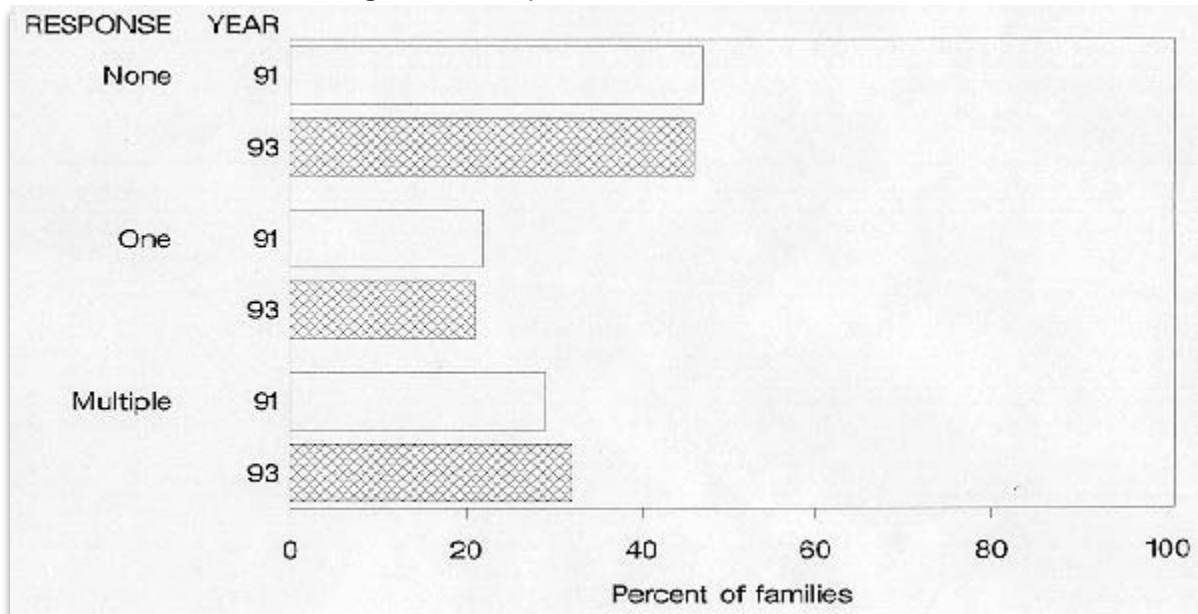
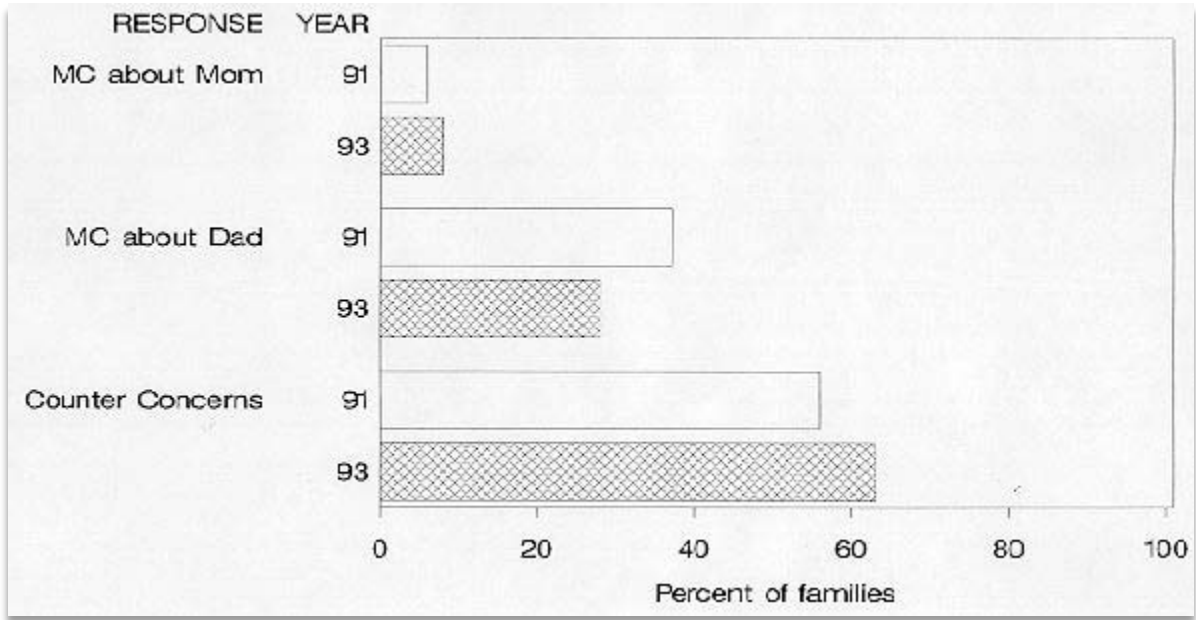


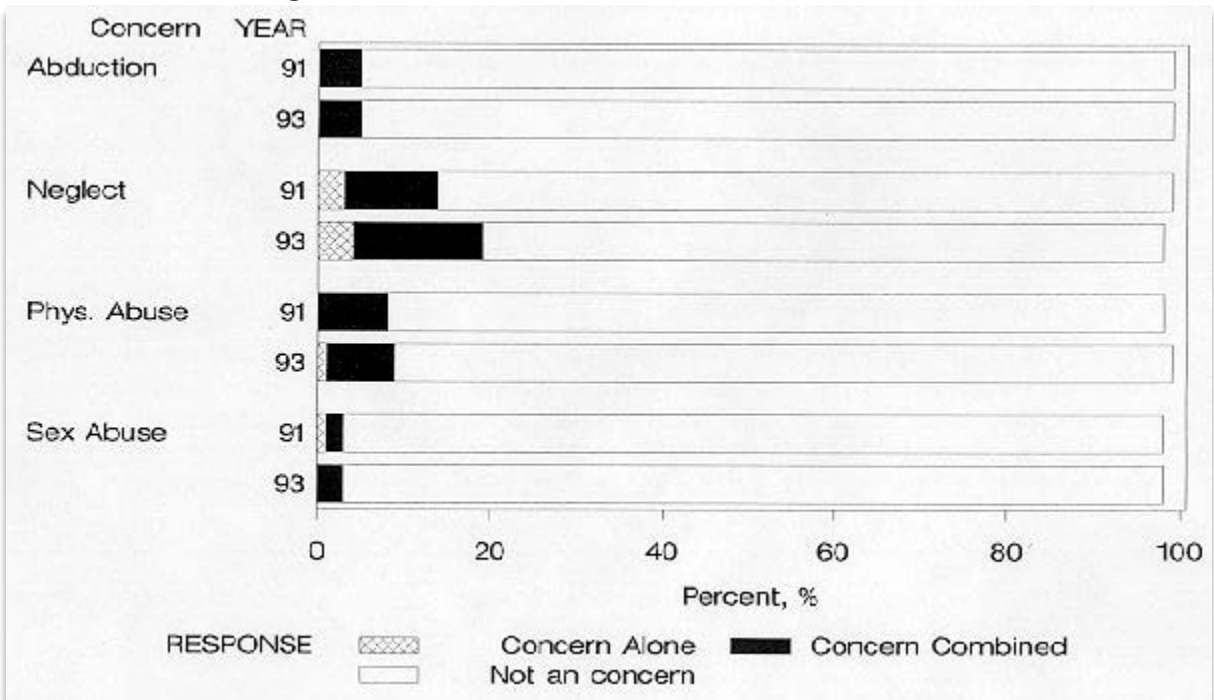
Figure 12: Multiproblem Families, 1991/1993



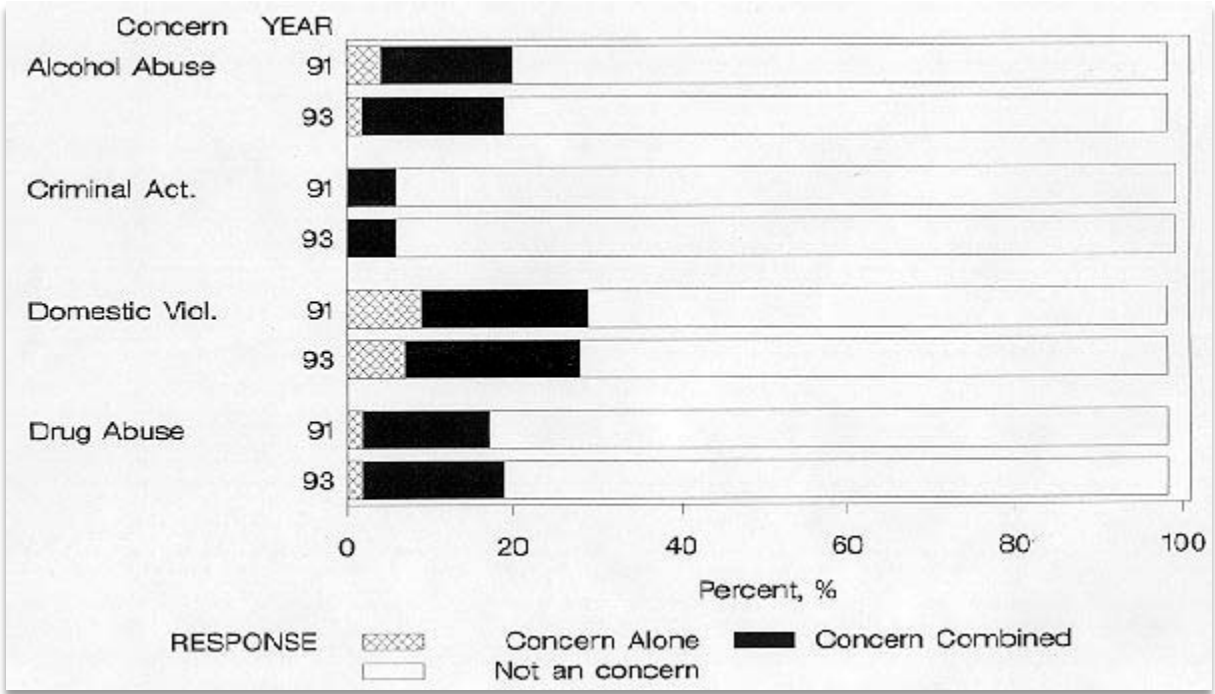
**Figure 13: Families with Multiple Concerns, 1991/1993**



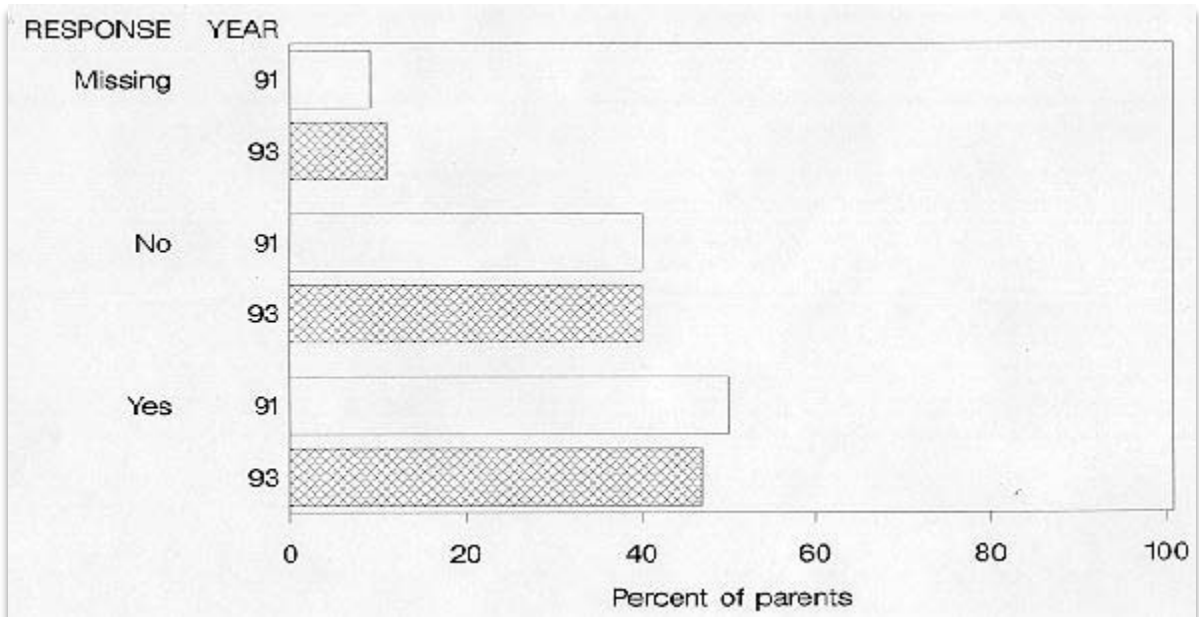
**Figure 14: Child Concerns Raised in Mediation, 1991/1993**



**Figure 14a: Other Concerns, 1991/1993**

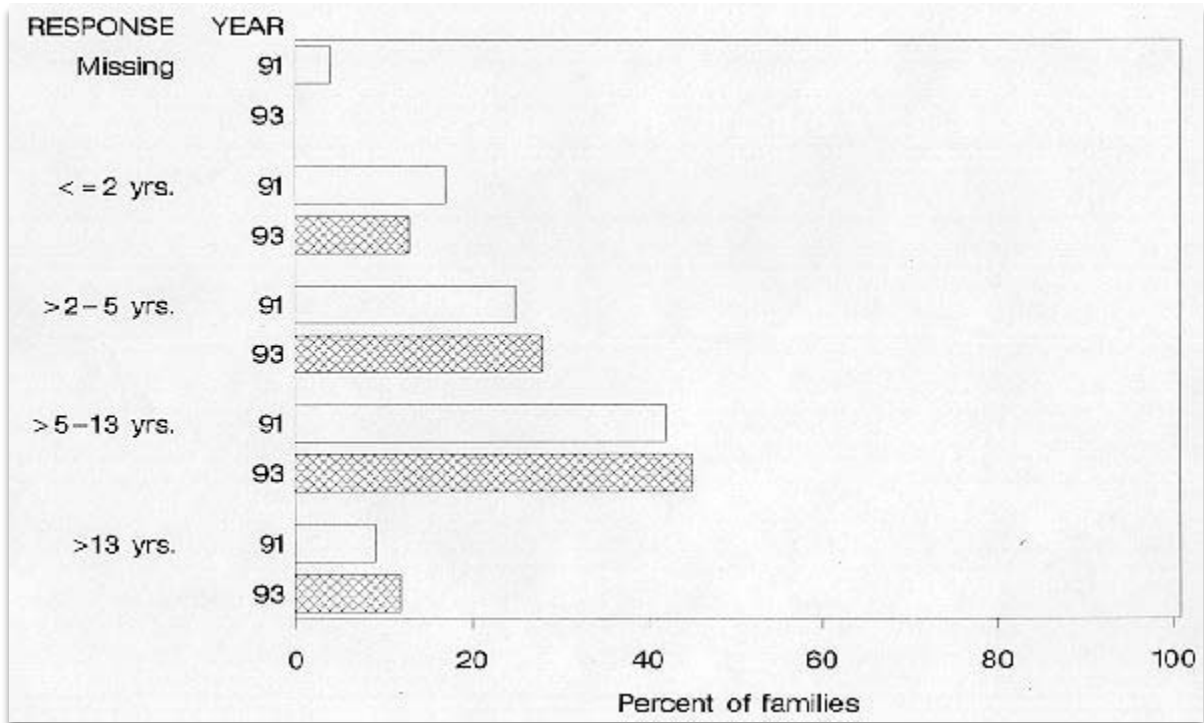


**Figure 15: Domestic Violence Temporary Restraining Orders, 1991/1993**

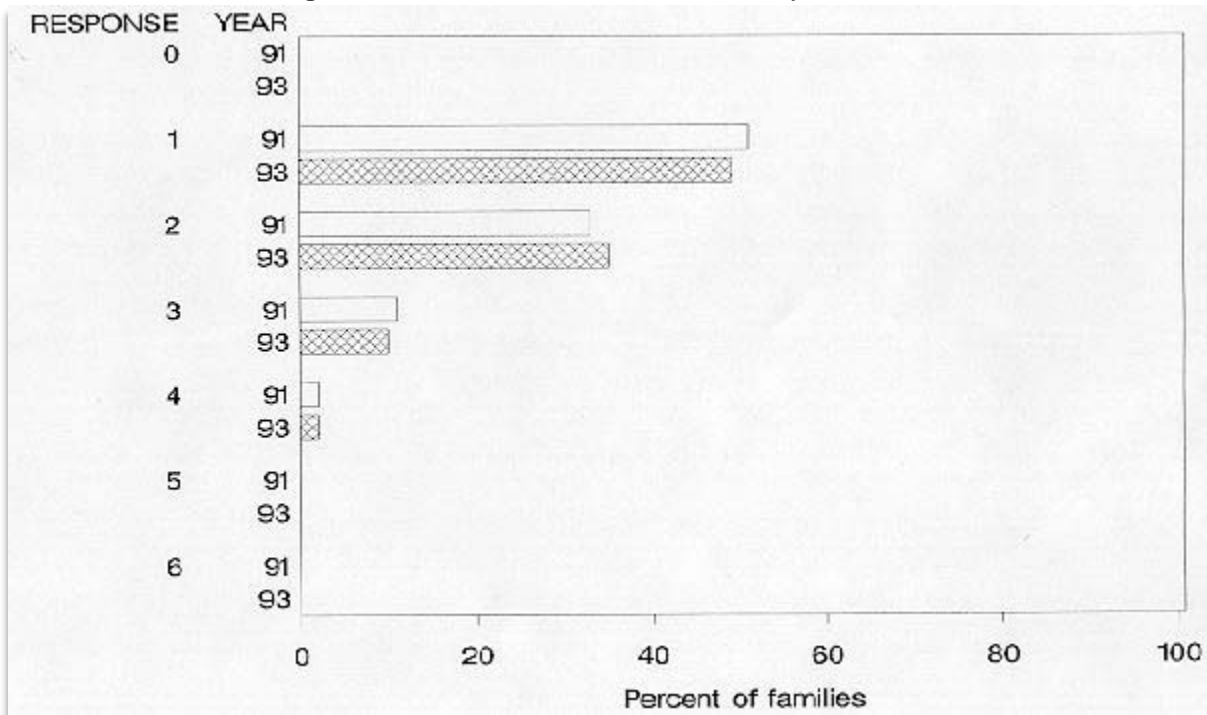




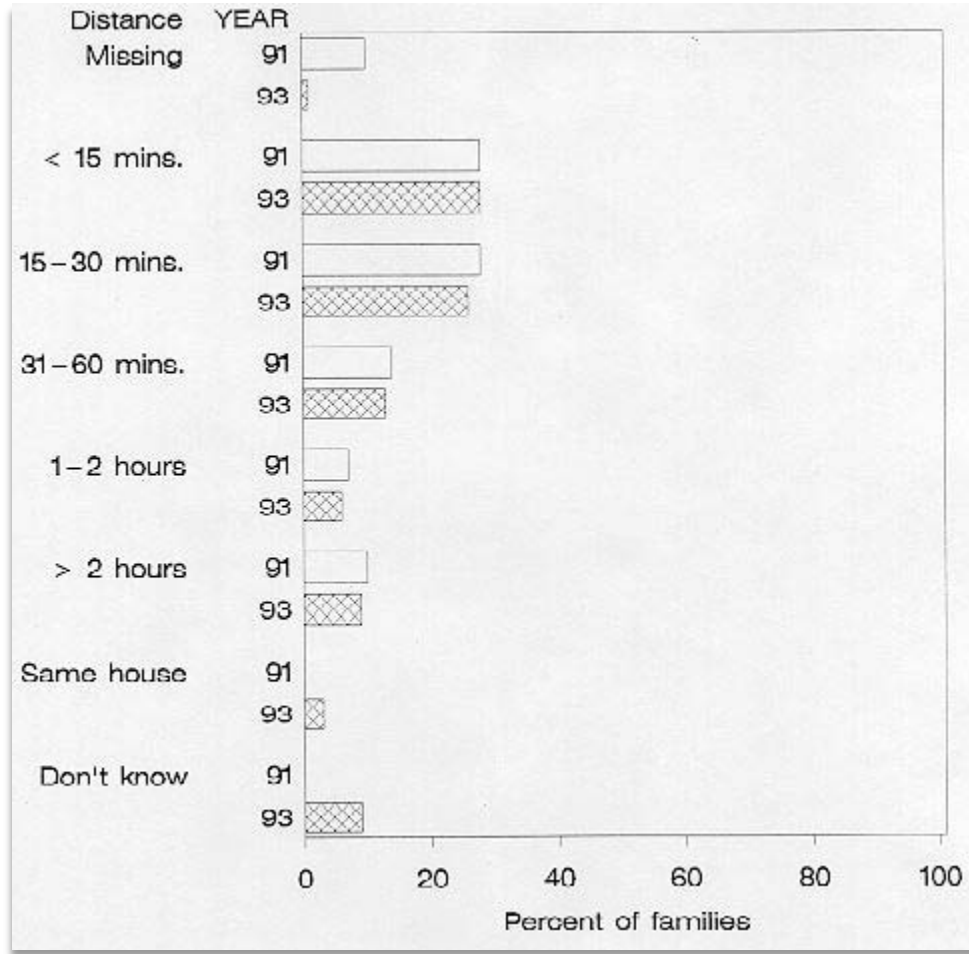
**Figure 16: Age of Children in the Family, 1991/1993**



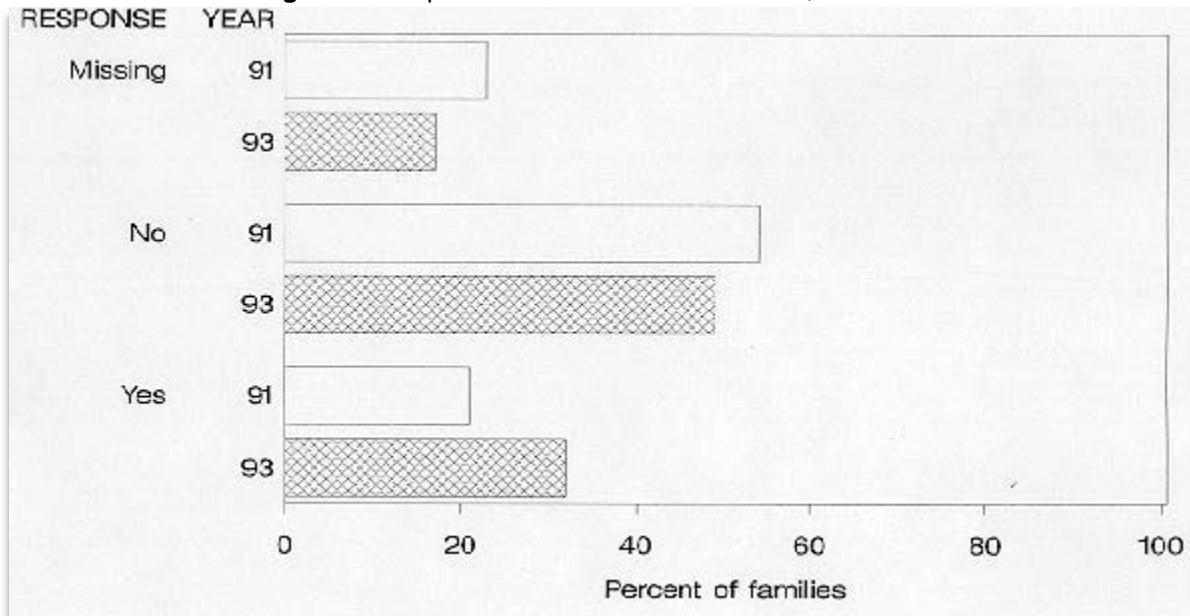
**Figure 17: Number of Children in the Family, 1991/1993**



**Figure 18: Distance Between Parents, 1991/1993**



**Figure 21: Report to Child Protective Services, 1991/1993**



**Figure 22: Child Witnessed Violence, 1991/1993**

