

LOS ANGELES COUNTY OVERVIEW




Michael Nash, Presiding Judge
Los Angeles Juvenile Court

Beyond the Bench
December 15, 2011
mnash@lasuperiorcourt.org

Los Angeles County Overview

- 88 Cities
- 10.5 million residents
- Population exceeds that of 42 states
- 25% of the population are children under the age of 18.
- One of the most diverse populations in the world
- Over half of the county residents speak a language other than English at home.
- 3% of the Nation's population
- Home of 28% of California's population

- 
-
- o **Los Angeles Superior Court**
 - 594 courts
 - 48 courthouses
 - o **Los Angeles Juvenile Court**
Delinquency Court
 - 28 courts
 - 10 locations
 - 20, 000 + youth on probation

- 
-
- 3 juvenile halls – average daily population – 1100
 - 15 camps – average daily population – 1100
 - Suitable placement – average number – approximately 1400

Informal Juvenile and Traffic Court

- 13 courts
- 11 locations
- 100,000 citations (2010)




○ Dependency Court

- 20 courts
- 2 locations

Edmund D. Edelman Children's Court



*The first of its kind
in the nation.*

- 
-
- 25,763 children under court jurisdiction (Oct. 2011)
 - 8065 – Family Maintenance
 - 9972 – Permanent Placement
 - 7041 – Family Reunification

2000 + adoptions annually since 1998



Judge Michael Nash congratulates a happy new family.

Adoption Saturday



Adoption Saturday

Adoption Saturday, our innovative and nationally recognized event that finalizes adoptions for dozens to hundreds of foster children on a single day, celebrated a decade of service to families last year. Fortieth, the milestone was marked by a November Adoption Saturday in which the adoptions of more than 200 children were consummated. Since the events began in 1998, they have seen

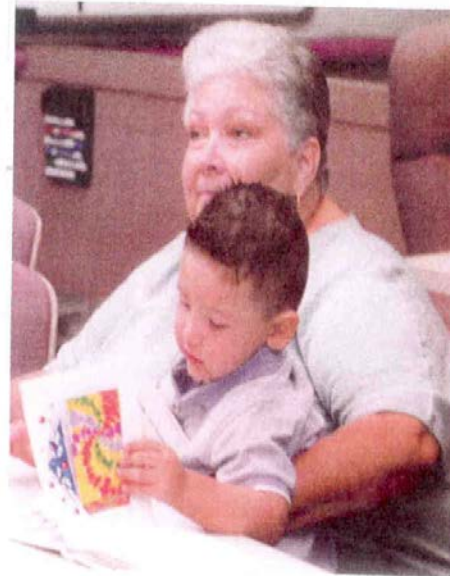
more than 10,000 children join permanent families.

Adoption Saturday was originated by our Juvenile Court presiding judge, in partnership with the Alliance for Children's Rights, Public Counsel, the Los Angeles County Department of Children and Family Services and major law firms. As always on Adoption Saturday, the festive 10th anniversary installment brought our hundreds of family members and friends to help newly adopted children celebrate the day.

Fifteen volunteer judges handled the adoptions at the Edmund D. Edelman's Children's Court.



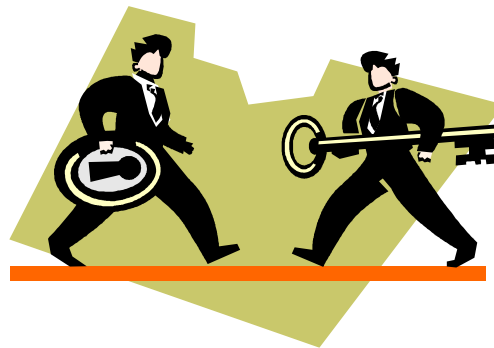
ADOPTION
IS A
GREAT
OPTION



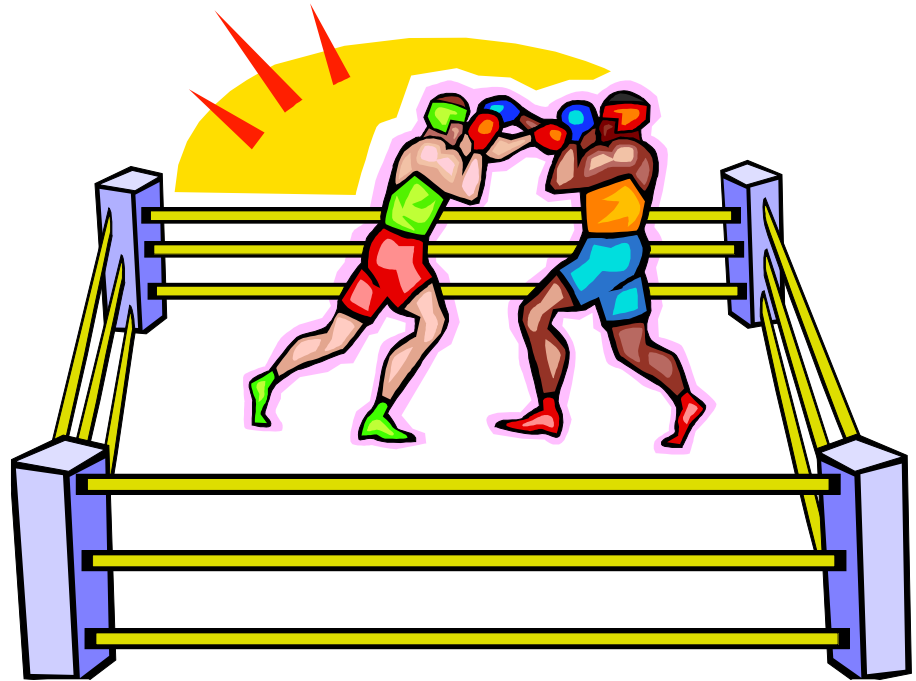
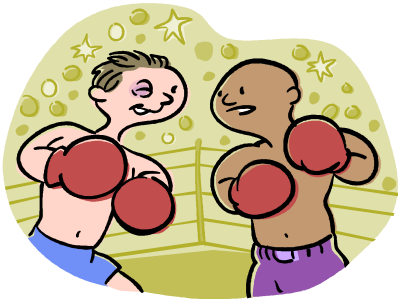
Collaboration

○ Keys

- Coming Together
- Talking Together
- Working Together



Los Angeles in 1995



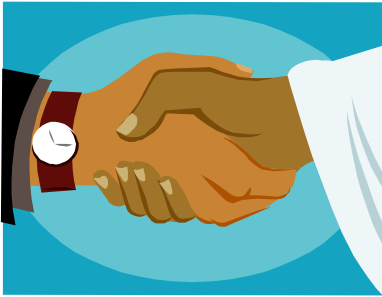


The Path to Partnership

- Urgency
- Leading Change
- Everyone is on the Team
- The Vision
- Communicate, Communicate....
- Overcoming Barriers
- Short Term Wins (PDSA)
- Take Action
- Reinforce
- Celebrate

“Best is the enemy of better”

Los Angeles in 2008

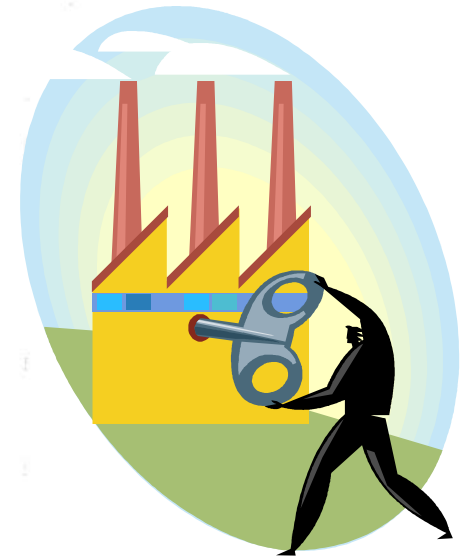
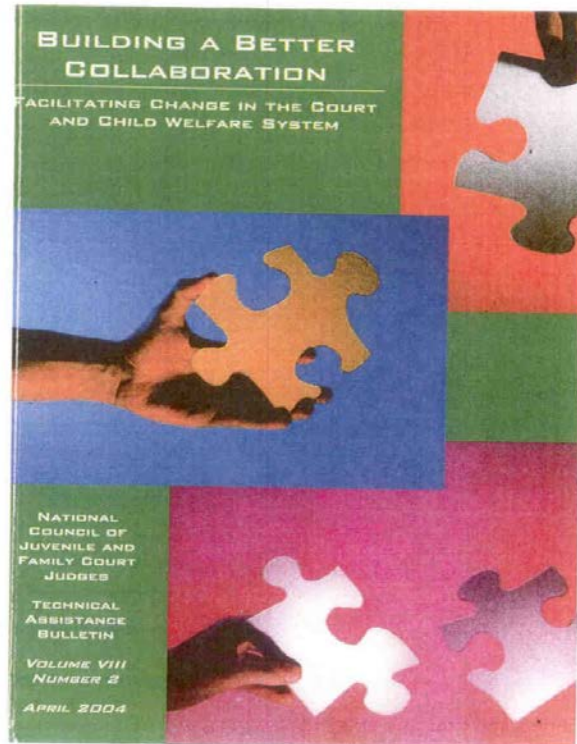




NCJFCJ Website

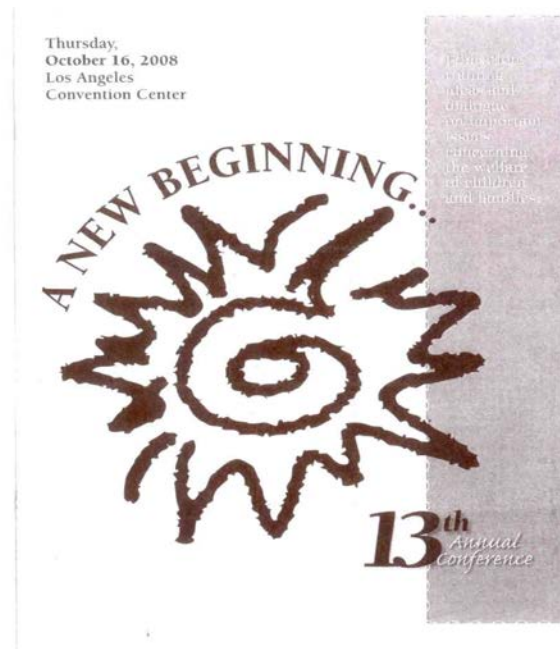
- www.ncjfcj.org

Building A Better Collaboration



Examples of Collaboration

- Partnership Conference



Newsletter

PARTNERS

Programs and Resources for Children and Families

Los Angeles County Juvenile Court Newsletter • Volume 13 • Number 1 • Fall 2008

Committee Explores Dental Health

by Supervising Judge Margaret S. Henry, Dependency Court

At the National Council of Juvenile and Family Court Judges Conference in New Orleans in October 2007, the highlighted topic was dental health.

While some tend to think of dental health as secondary, the presenters were quite convincing that it is a vital part of dependent children's overall future physical and mental health.

Involvement of dentists with our dependent children is key for reporting and forensic purposes, as well. The Los Angeles County Model Court contingency was very impressed with the presentations.



Dr. Beverly Largent, President Elect, American Academy of Pediatric Dentistry

A representative of NCJFCJ also announced at the meeting that

the council was pleased to partner with the American Academy of Pediatric Dentists to invite the Model Courts to participate in Oral Health Month 2008.

Participating Model Courts were asked to pilot an initiative. The American Academy of Pediatric Dentists provided posters, brochures and toothbrush kits. As part of the initiative, volunteer Model Courts agreed to:

- Post posters offering information about Oral Health Month.
- Give parents and caregivers brochures on the importance of a child's oral health.
- Hand out toothbrush kits.
- Inquire as to each child's oral health at every hearing.
- Reach out to local dental health providers.

With these thoughts in mind,

Juvenile Court Presiding Judge Michael Nash asked me to chair a committee to prepare for National Oral Health month in February and to explore how the Court and the agencies involved with the dependency system can improve dental health and maximize input from the dental community.

Initially, it was not expected to be an ongoing committee. However, it quickly was discovered that there were more issues than anticipated and much that the involved stakeholders could do to improve dental health for dependent children in Los Angeles County.

We learned that Los Angeles County Supervisor Michael D. Antonovich had planned a dental health summit with the Los Angeles County Department of Children and

See "Dental Health" on page 21

In This Issue

Child Abuse and Neglect	2	Dependency Health Services	10	Los Angeles County Superior Court	16
Dependency Health Services	10	Los Angeles County Superior Court	16	Los Angeles County Superior Court	16
Los Angeles County Superior Court	16	Los Angeles County Superior Court	16	Los Angeles County Superior Court	16
Los Angeles County Superior Court	16	Los Angeles County Superior Court	16	Los Angeles County Superior Court	16
Los Angeles County Superior Court	16	Los Angeles County Superior Court	16	Los Angeles County Superior Court	16
Los Angeles County Superior Court	16	Los Angeles County Superior Court	16	Los Angeles County Superior Court	16
Los Angeles County Superior Court	16	Los Angeles County Superior Court	16	Los Angeles County Superior Court	16
Los Angeles County Superior Court	16	Los Angeles County Superior Court	16	Los Angeles County Superior Court	16
Los Angeles County Superior Court	16	Los Angeles County Superior Court	16	Los Angeles County Superior Court	16
Los Angeles County Superior Court	16	Los Angeles County Superior Court	16	Los Angeles County Superior Court	16

Collaboration

- Cross-Training
- Confidentiality
- Crossover Youth
- Dental Health
- Disproportionality
- Education
- Adoption Saturday
- Family Reunification Week



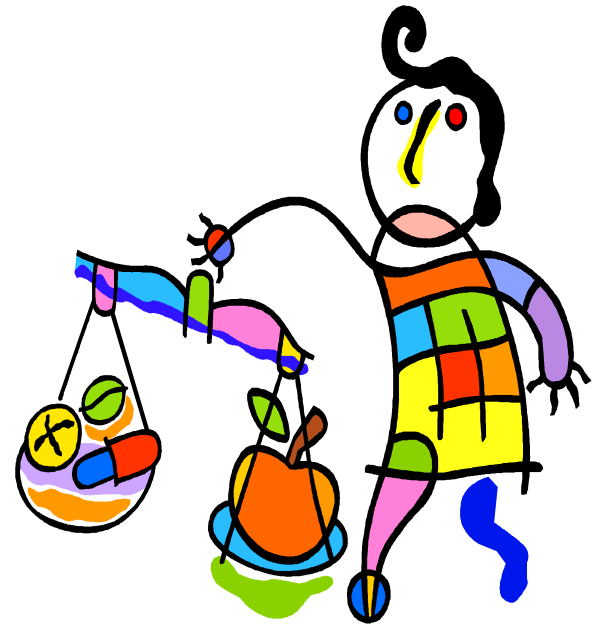
Collaboration

- o Resource Guidelines
- o Delinquency Guidelines
- o Delinquency Drug Courts
- o Delinquency mental Health Court
- o Drug Protocol – Parents
- o Drug Protocol – Dependent Youth
- o Health
- o ICWA



Collaboration

- Permanency
- Psychotropic Meds
- Visitation
- Weight Management
- Zero to Three



Collaboration

- **Meetings**
 - Chief PO/Court
 - Director/Court
 - Multi-Agency
 - Court Counsel
 - Judicial Officers

