

BEYOND THE BENCH | Checks & Balances

---

---

---

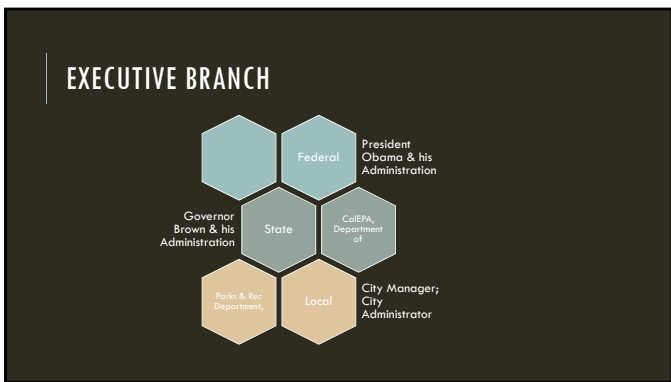
---

---

---

---

---



---

---

---

---

---

---

---

---

**Powers:**  
Spend budget  
Approve budget  
Make appointments  
Sign/Veto Laws  
Administer Programs  
Issue Executive Orders  
Grant funds

GOVERNOR | Jerry Brown

---

---

---

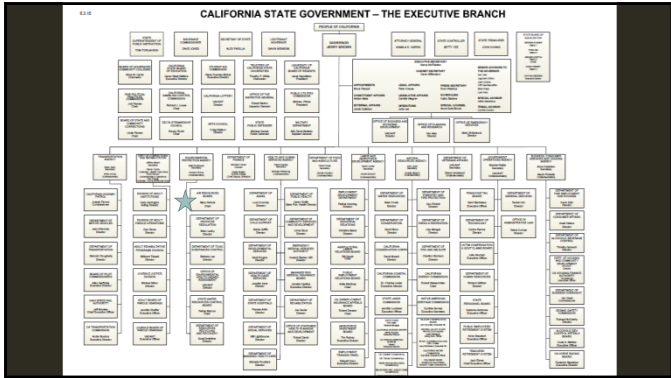
---

---

---

---

---




---



---



---



---



---



---




@lorreskristen

@pawlingkristen

STAY IN TOUCH

[pawling@scag.ca.gov](mailto:pawling@scag.ca.gov)

---



---



---



---



---



---

CALIFORNIA LEGISLATURE

---



---



---



---



---



---

## TWO HOUSES: ASSEMBLY & SENATE



---

---

---

---

---

---

---

---

## ASSEMBLY/SENATE DISTRICTS



---

---

---

---

---

---

---

---

## HOW A BILL BECOMES LAW



---

---

---

---

---

---

---

---

## MORE INFORMATION

CA State Assembly

<http://assembly.ca.gov/>

CA State Senate

<http://senate.ca.gov/>

CA Capital Fellows Program

[http://www.csus.edu/calst/capital\\_fellows\\_programs\\_overview.html](http://www.csus.edu/calst/capital_fellows_programs_overview.html)

---

---

---

---

---

---

---

---



---

---

---

---

---

---

---

---



---

---

---





---

---

---

---

---

<p><b>California Supreme Court</b></p> 	<p><b>US Supreme Court</b></p> 
<p><b>California Courts of Appeal</b></p> 	<p><b>US Courts of Appeals</b></p> 
<p><b>California Superior Courts</b></p>	<p><b>US District Courts</b></p>

---

---

---

---

---

---

---

---

**Learn More About the California Judicial Branch**

- California Courts: [www.courts.ca.gov](http://www.courts.ca.gov)
- California Judicial Branch Fact Sheet: [www.courts.ca.gov/documents/Calif\\_Judicial\\_Branch.pdf](http://www.courts.ca.gov/documents/Calif_Judicial_Branch.pdf)
- California Law: [leginfo.legislature.ca.gov](http://leginfo.legislature.ca.gov)

Please feel free to email me:  
 Suzie Townsend  
 stownsend@sb-court.org

---

---

---

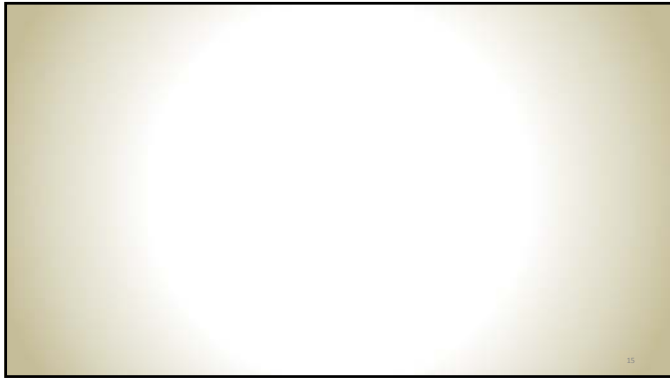
---

---

---

---

---




---

---

---

---

---

---

---

---